

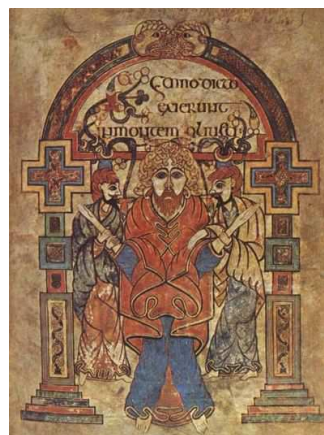
A Monk in an early Christian Monastery

A monk in an early Christian monastery would have become a monk because he wanted to be closer to God and pray without distraction. Monks thought that if they devoted their life to God it would please him and he would accept them into heaven.

Monasteries were built in remote places. They were built in the countryside and on islands. Sceilg Mhichil was an island off the coast of Kerry. Glendalough was the monastery of St Kevin.

Monasteries had a church, a scriptorium a round tower and an abbot's cell. The monks slept in beehive huts. There were also smith workshops and some high crosses. They worked, prayed and helped the sick and poor.

A scriptorium was where the scribe worked and wrote manuscripts. The book of Kells is a famous manuscript. A round tower was where all the monks went if thieves came to rob them. Smiths made chalices like the Ardagh chalice. A high cross had pictures of Jesus life.



Early Christian Monastery

| | | |
|----------------|---|---------------|
| Manuscripts | A handwritten book | Book of Kells |
| Monasteries | A Place where monks lived together | |
| Scriptorium | A place in monastery where books were written by a scribe | |
| Vellum | Paper made from calf skin | |
| Round tower | A tower where monks hid from attack / Lookout tower | |
| Sceilg Mhichil | A monastery on a tiny Island off the coast of Kerry | |
| High Crosses | Big stone crosses with pictures of the bible carved on them | |
| Glendalough | The monastery of St Kevin in Wicklow | |
| Scandinavia | Where the Vikings came from | |
| Beehive Huts | Cells or small rooms where the monks slept | |
| Abbot | Head of the monastery | |