



Exploration

New Ships and Instruments

Keywords

Henry the Navigator

Sagres

Caravel

Clinker

Lateen Sails

Astrolabe

Compass

Portalano

Knots

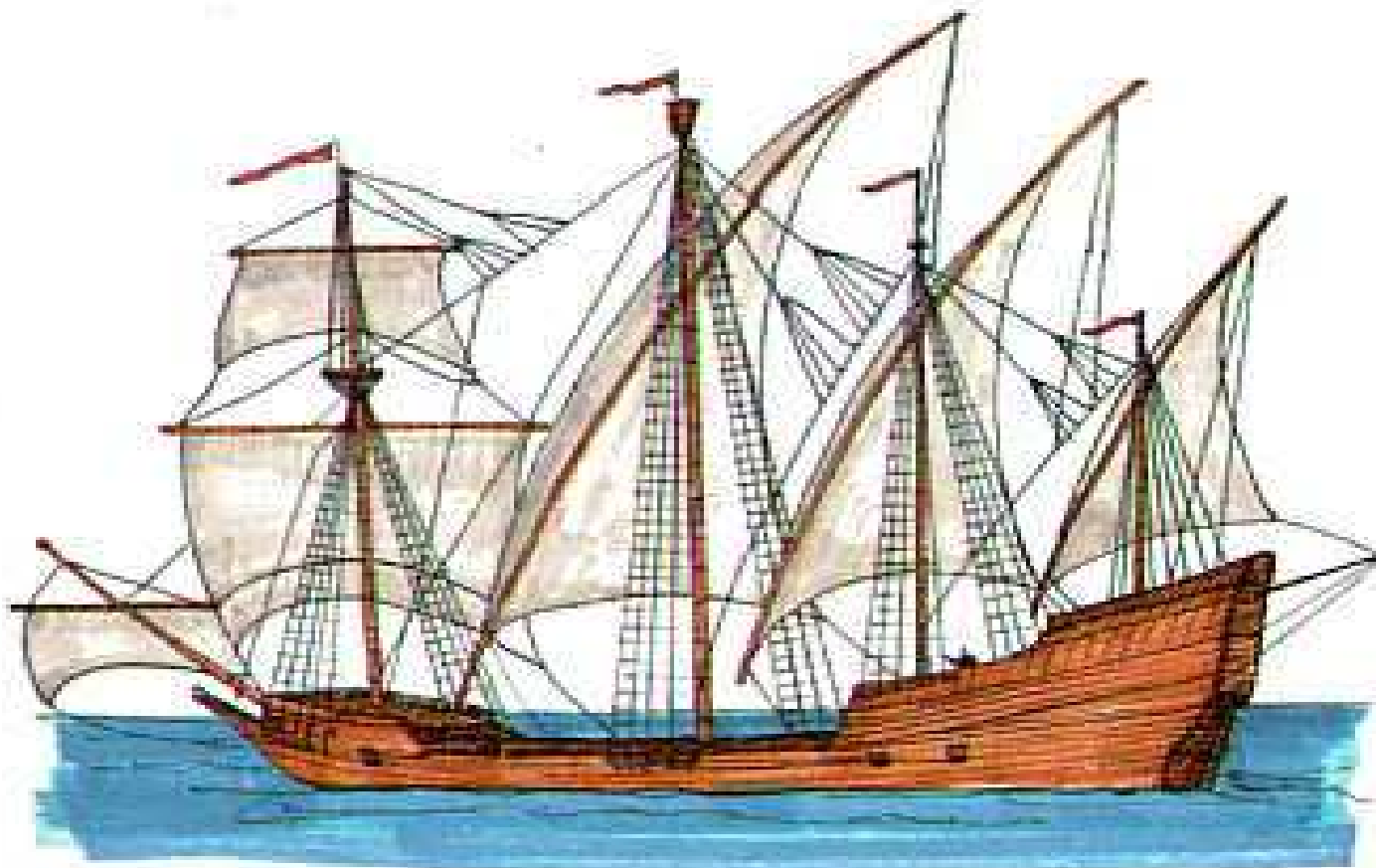
Prince Henry the Navigator



- Was from Portugal
- He was interested in exploration
- He set up a school to improve exploration

New Ships

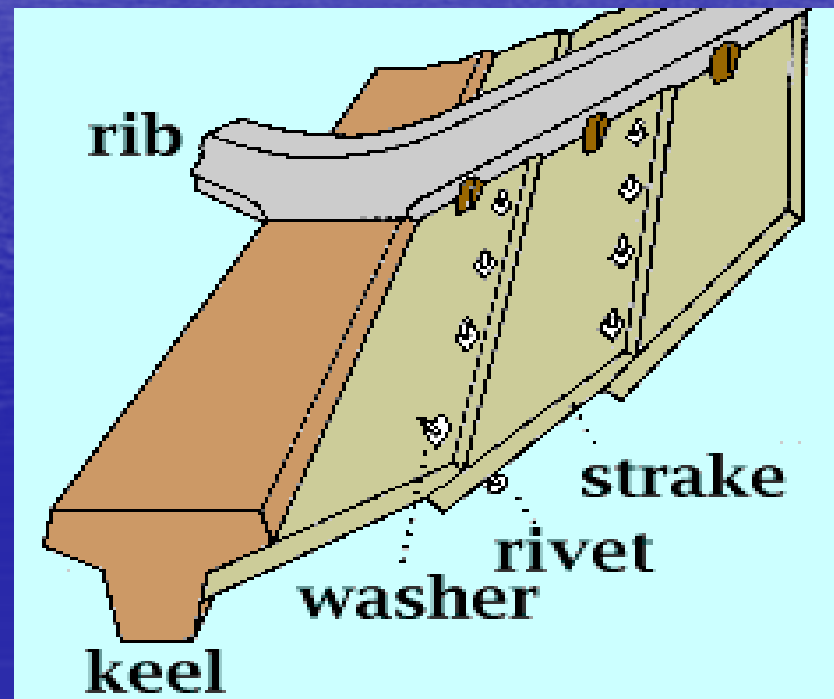
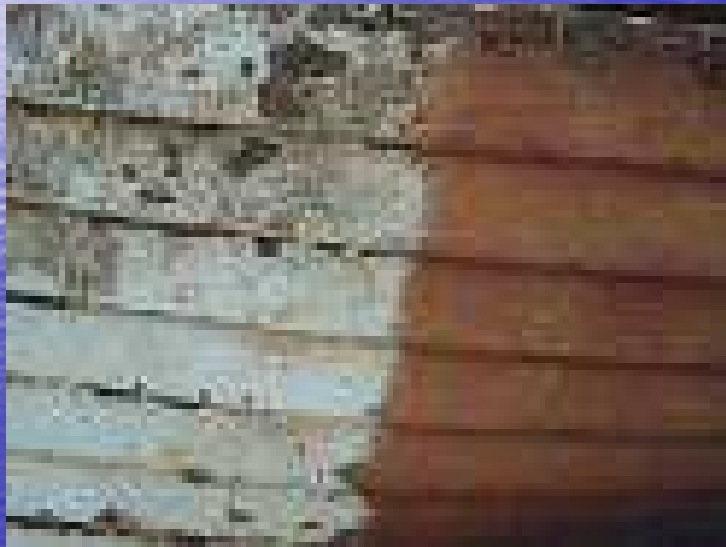
- New ships that were stronger and faster were designed.
- A caravel was a strong and fast ship. It was Clinker built with Lateen Sails



16th Century Caravel

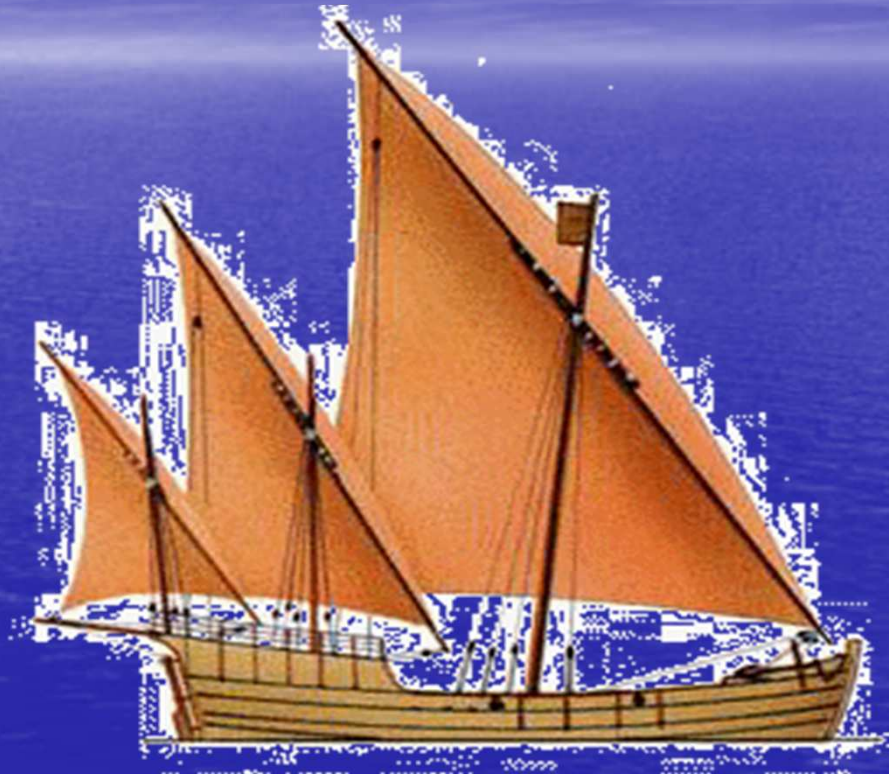
Clinker Built

Clinker means overlapping planks of wood



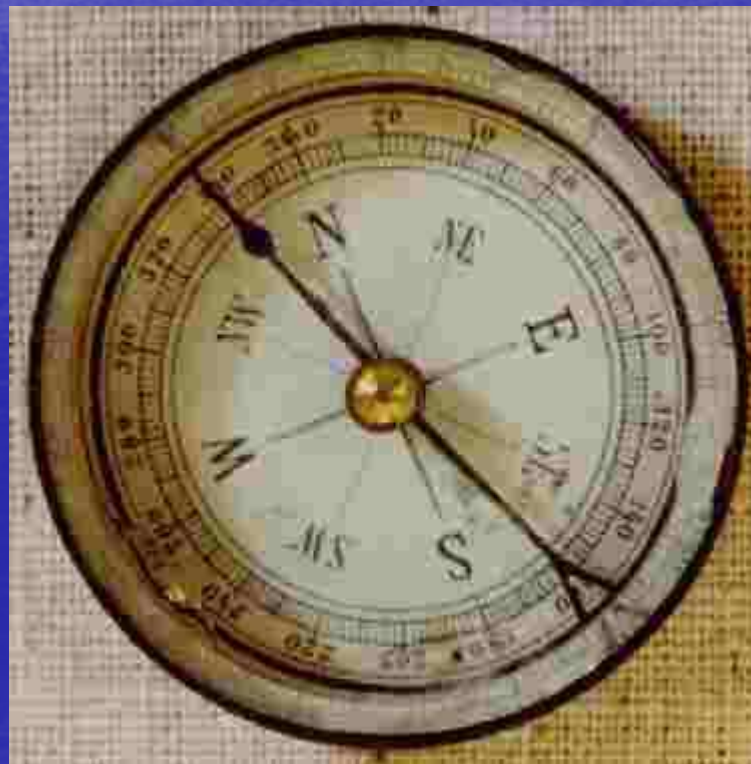
Lateen Sails

- These were triangular sails. They made the ship easier to steer



New Instruments

- Compass told the direction they were travelling in

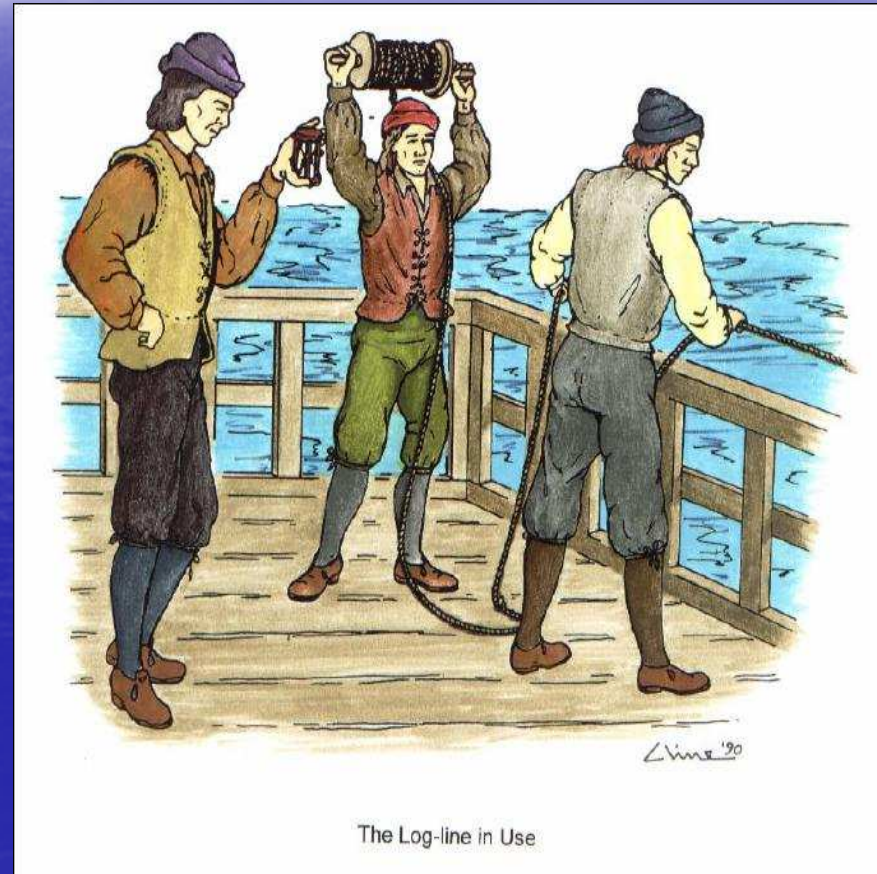


- Portalano A map which showed weather and winds



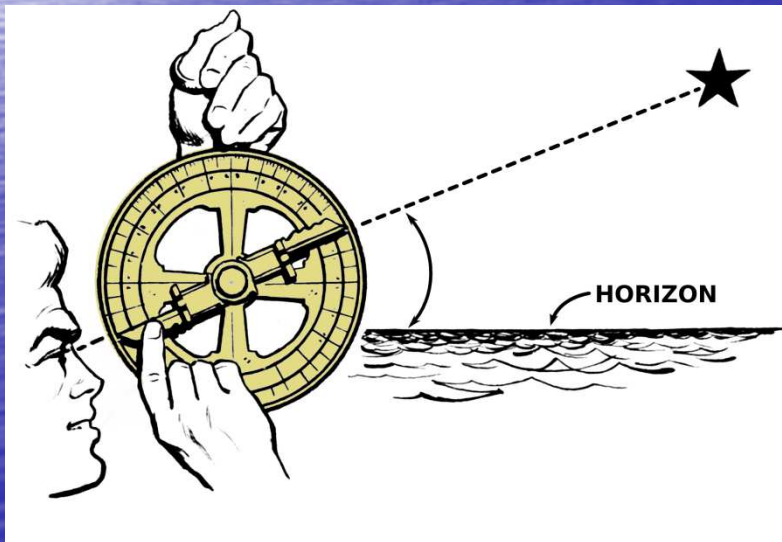
Log and Line

- A log attached to a knotted rope was thrown into the sea.
- After a certain amount of time it was pulled out and the number of knots was counted.



Quadrant

Used to measure the height of the stars to work out latitude



Hourglass

The hourglass was used to count time.

Sand would pass through over an hour.

It would be turned over to start again

