

Castles

Motte and Bailey
Stone Castles



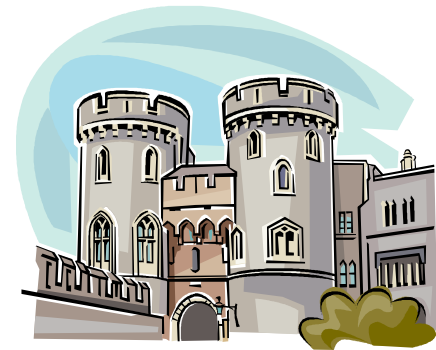
Homework

- ❑ You are a lord building a castle
- ❑ You know you are going to be attacked
- ❑ What do you do in preparation? What do you build?

- ❑ Describe the attack, what do your enemies do?


Do you win?

Draw pictures to help if you like



Motte and Bailey Castles

- ❑ Motte and Bailey Castles were the first type of castles
- ❑ A motte was a hill of earth with a wooden keep on top
- ❑ The wooden keep was where soldiers kept a look out



- The Bailey was the courtyard in front of the castle. This was where the lord and his soldiers lived

- It was surrounded by a wooden palisade fence

- The weakness of this castle was that it could be easily destroyed by fire

Stone Castles



- ❑ **The keep** was the main building in the castle. The lord and lady lived here.
- ❑ **Battlements** were where soldiers kept watch on a wall
- ❑ A **portcullis** was an iron grid gate
- ❑ A **drawbridge** was a bridge that lifts up in time of attack



- ❑ **The moat** was a ditch filled with water surrounding the castle
- ❑ In the **courtyards** of stone castles there were stables, sheds, Blacksmith forges, kitchens gardens and wells
- ❑ The **stairs** would be narrow and circled to the right making it easier to fight going down than up

Defensive Features of the Castle

Battlements

Stone walls

Narrow windows

Moat

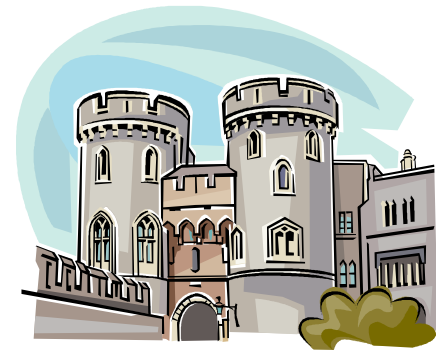
Portcullis

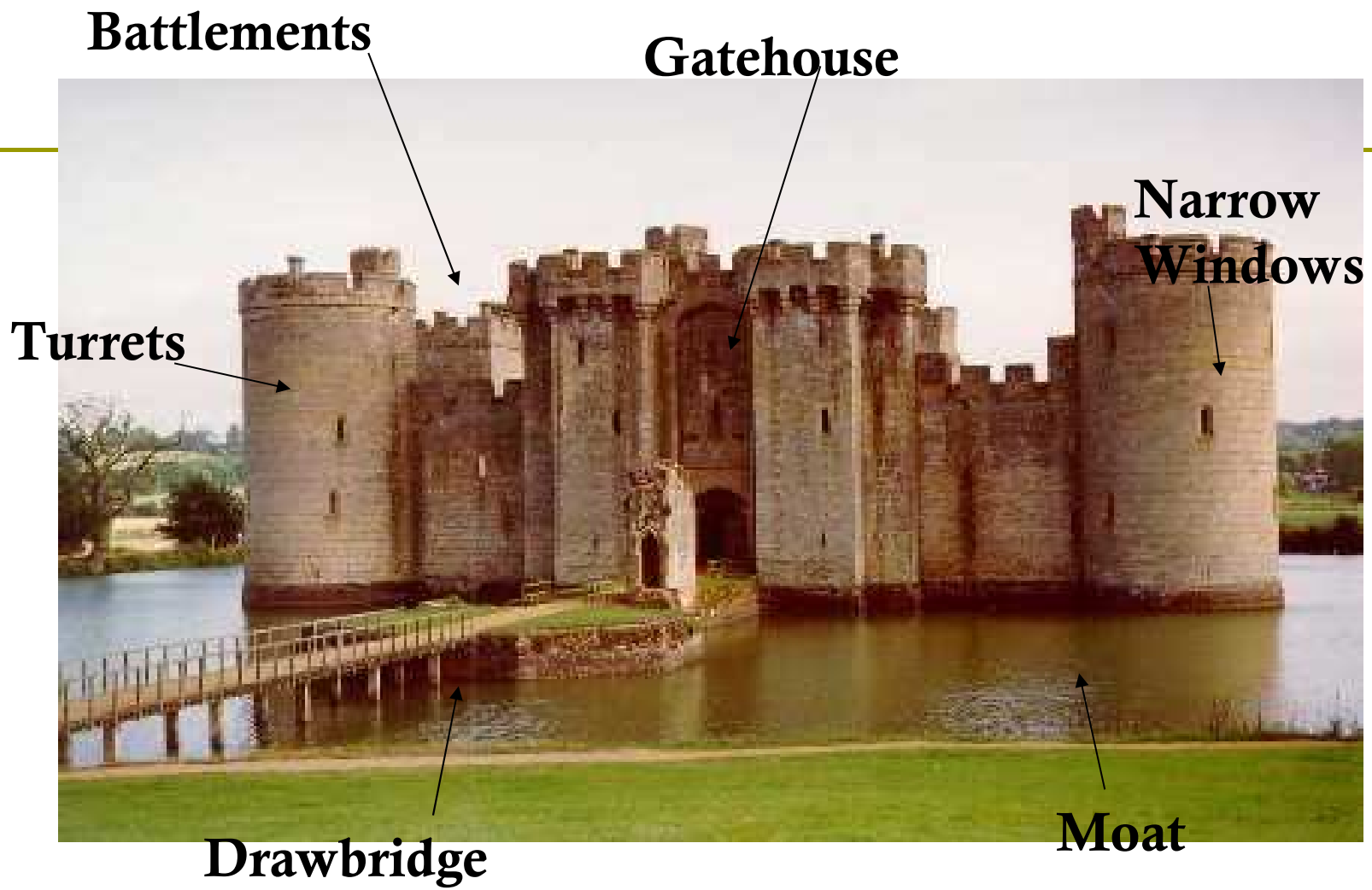
Drawbridge

Gatehouse

Stairs in the keep

Murderholes





Battlements

Gatehouse

**Narrow
Windows**

Turrets

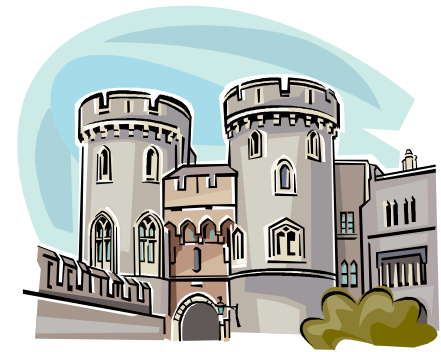
Drawbridge

Moat



Attacking a Castle

- ❑ **Battering ram** to smash open gates
- ❑ **Giant catapults** to throw huge boulders or fireballs over the walls
- ❑ **Mining** to dig tunnels under the walls to weaken them
- ❑ **Ladders** to climb the high walls
- ❑ **Fire arrows** to burn any wooden structures



Castle under siege



- ❑ The most effective way of attacking a castle was to lay it under siege. The army stopped all food going in in the hope to starve those inside the walls
- ❑ To avoid this every castle had a well, vegetable gardens, animals and a large supply of food to keep them going